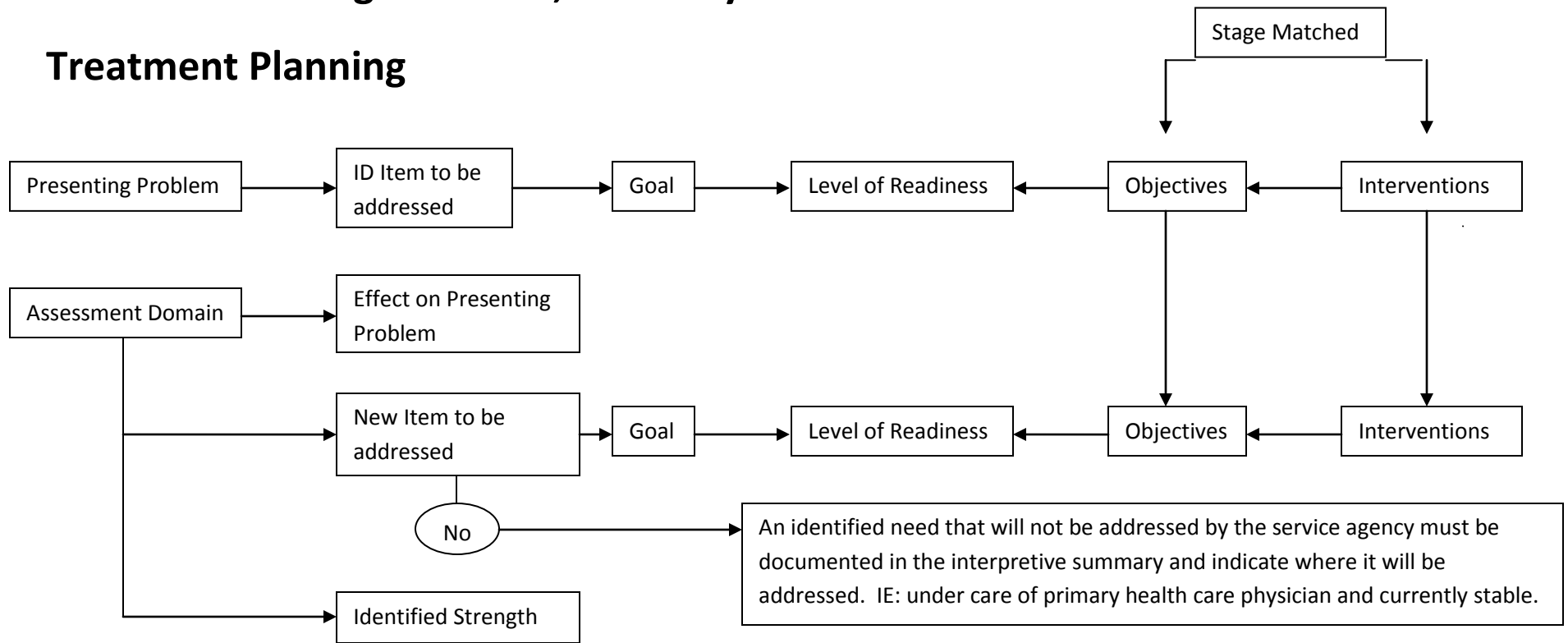


Process for Strengths-Based, Recovery-Oriented Treatment Planning



Process continues through each assessment domain. Each domain is assessed to determine if/how it impacts the presenting problem for any new item that will need to be addressed. If any assessment domain identifies a need that must be addressed, the assessor must determine if it will be address by the agency in the plan or by an outside resource/agency. If the need will be addressed b y the agency it must be included in the Individual Plan of Service (IPOS). If the need will be addressed by an outside resource it must be documented in the comprehensive summary at the end of the assessment. Each item in the IPOS must include the level of readiness of the individual to work on that item, and must have stage matched interventions. Goals and objectives are the person receiving services. Interventions are the serving agency.

